

*NATHANIEL  
LLOYD  
RICHARDS*



Crafting Poetry, Curating Stories.

**Electronic Press Kit**



# Content

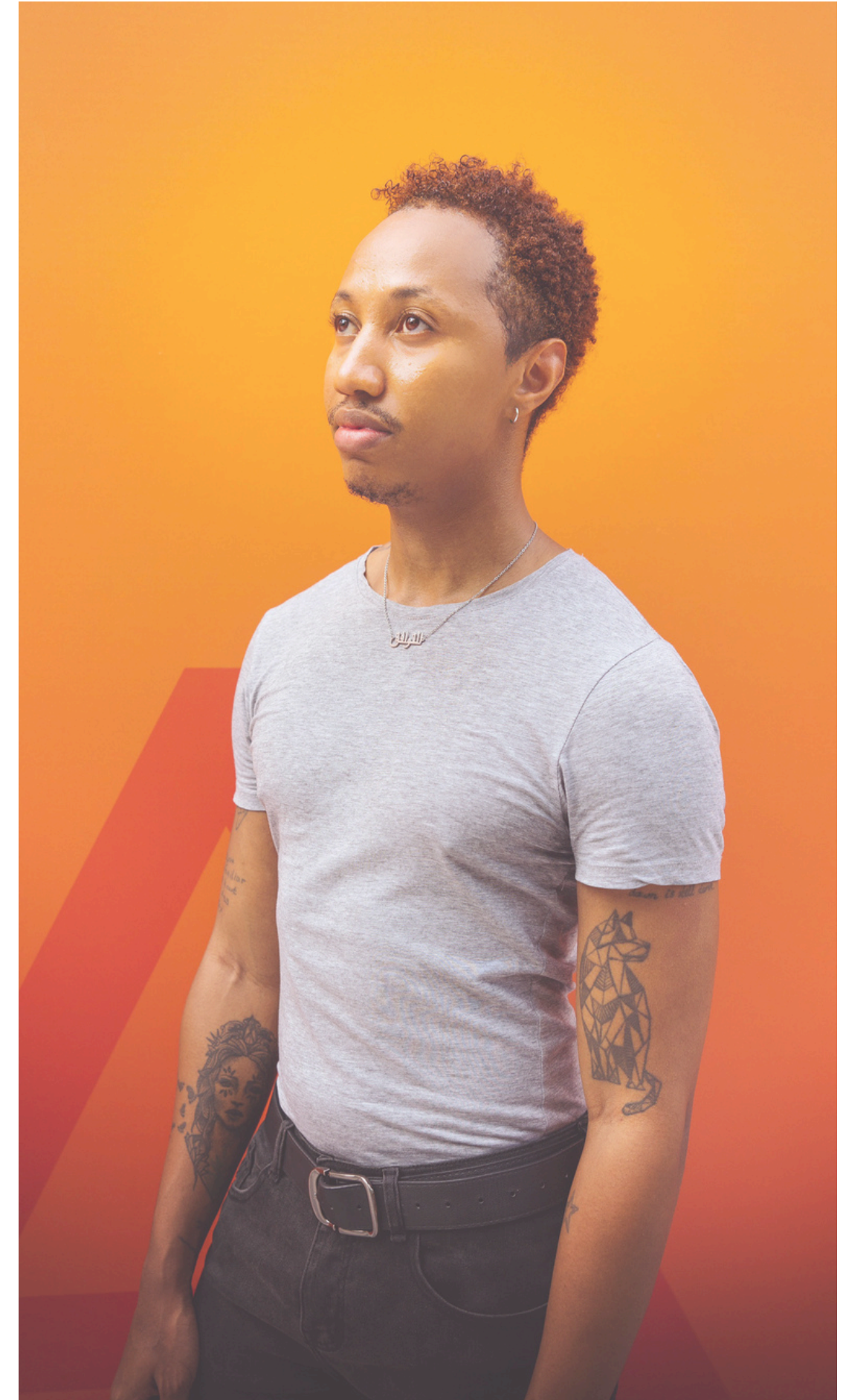
- Artist Statement
- Lighthouse
- Ode To Black Women.
- FAQ
- Creative Futures x Soho House Fellowship Program
- FAQ
- Drowning Documentary
- FAQ
- Manchester Documentary
- F & P Artist Residency
- FAQ
- Media
- Links
- Contact

# Artist Statement

“You’re doing a really good ting Nay-tan.” Words from my 92 year old Jamaican grandma after I interviewed her for my visual poetry/mini documentary film based on my poem ‘Ode To Black Women’. That enduring accent still thick and intact after 62 years of living in the UK, a true reflection of my Grandmothers strength, pride and resilience. It resonates through my creative endeavors and is a trait I hope to continue to apply to the creation of my art.

My name is Nathaniel Lloyd Richards I am the only boy of five siblings, the son of two Caribbean immigrants. My father from Jamaica and my mother from the tiny country of St Kitts and Nevis. Both my parents struggled adjusting into the UK and initially were only offered manual labour jobs while experiencing extreme poverty and racism I’m sure they only told me the half of. My father is no longer with us but my mother (now retired) enjoyed a successful career as a Mental Health professional. My parent’s struggle and triumph in the face of adversity, navigating a new life in the UK, I feel add depth to my narrative. Their experiences, though challenging, have contributed to the mosaic of influences that inform my art. I have embraced and woven these diverse elements into my work, creating a reflection of my heritage and the broader human experience.

I have always been inspired by my surroundings, growing up in Manchester our community was a melting pot of cultures and ethnicities, an inner-city mish-mash of beautiful diversity. My household however was quintessentially Caribbean. From the food to the constant sounds of reggae, dancehall and Soca to the language used that, charmingly rough patois. Our culture was imbedded into the structure of the many houses we lived in. This is most blindingly evident in my poetry. My childhood experiences not only shape how I choose to live in the world, they seep into my writing, the language, the stories, the humour. The rich tapestry of my cultural background, rooted in the Caribbean but flourishing in the diverse community of Manchester, has undeniably shaped my artistic expression. cont...





# Artist Statement - Cont'd

For a long time my family have been the biggest supporters of me pursuing my creative passions and I don't take it lightly. This is because I don't come from a creative family, nobody in the family studied the arts or is an artist so to still have that support means everything to me even if sometimes they may not completely 'get it.'

Recently I was told (I hadn't asked) that I should choose one of my talents to focus on and I was taken aback by the sentiment. I have definitely shunned this idea that we need to as artists stick to one thing we are good at. I certainly identify as a multifaceted artist — a poet, singer/songwriter, music producer, director, and curator — who demonstrates a holistic approach to creativity. The fusion of my talents reflects the dynamic and ever-changing nature of art. By refusing to adhere to the notion of specialising in one area, I am embracing the freedom to explore and express myself across various mediums. I enjoy joining my talents together to create art and just like my dear Grandma this is something I refuse to change, art is never just one thing it is ever changing. I will continue to draw inspiration from my roots, to celebrate the beauty of diversity, and let my art be a reflection of the rich tapestry of my life.





# Lighthouse

"An experience I can't put into words. All I know is that every person out there who needs comfort without coddling, a kind heart without patronising tones, hope without delusion - needs to read it!"

**Rebecca Kenny, EIC Written Off Publishing**

When I set out to create "Lighthouse," I wanted to weave a tapestry of my innermost thoughts, experiences, and reflections—a journey that would not only resonate with readers but also serve as a beacon of hope in a world too often shrouded in darkness.

Each poem in "Lighthouse" is a piece of my soul laid bare—a testament to the deeply personal nature of this collection. I delve into the depths of my own struggles with mental health, laying bare the raw emotions and vulnerabilities that accompany such battles. Through my words, I hope to offer solace and understanding to those who may be navigating similar terrain, reminding them that they are not alone.

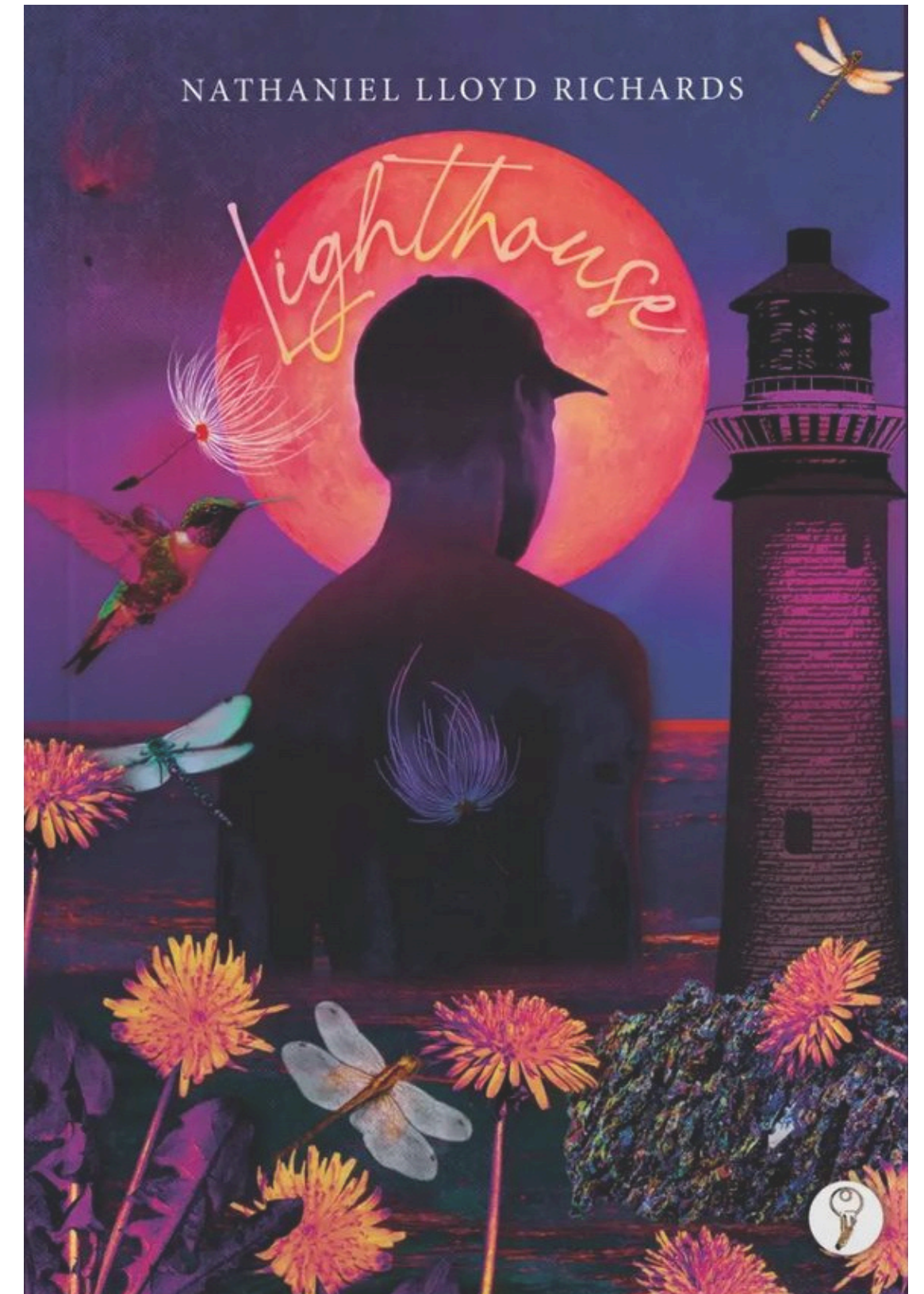
But "Lighthouse" is not merely a catalog of personal woes; it is a rallying cry against the injustices that pervade our society. I confront issues of social injustice head-on, using poetry as a tool for advocacy and empowerment. From systemic inequities to the marginalisation of minority communities, I refuse to shy away from the uncomfortable truths that demand our attention and action.

Grief, too, finds its place within the pages of "Lighthouse." I explore the intricacies of loss—the profound ache of absence, the bittersweet memories that linger, and the slow journey toward healing. Through my poetry, I seek to honour the complexities of grief while offering a glimmer of hope to those who mourn.

Above all, "Lighthouse" is a testament to the enduring power of hope. In the face of adversity, I refuse to surrender to despair. Instead, I choose to believe in the possibility of a brighter tomorrow—a tomorrow shaped by resilience, compassion, and unwavering optimism. My poetry serves as a guiding light, illuminating the path toward a future filled with promise and possibility.



'Lighthouse' was nominated for the Forward Prizes for Poetry





# Lighthouse







# ODE TO Black Women.

‘Ode To Black Women.’ is a poignant mini-documentary directed by Nathaniel Lloyd Richards, inspired by his powerful poem "Ode to Black Women." Set against the backdrop of the vibrant city of Manchester, the film intimately captures the stories of 4 remarkable black women as well as an extended cast ranging from 19 to 92 years old.

The documentary unfolds as a mosaic of experiences, each woman sharing personal narratives that echo strength, resilience, and empowerment. It beautifully weaves together tales of triumph over adversity, including a courageous battle against breast cancer, through diagnosis, double mastectomy, and the empowering choice to embrace her body as it is.

A story about a mother of two who contracted COVID-19 while nine months pregnant adds a poignant layer to ‘Ode to Black Women.’ This particular narrative not only reflects the challenges posed by the global pandemic but also underscores the resilience and strength of black women in the face of adversity. The details of the mother being in a coma for six weeks, giving birth while in that state, and subsequently fighting her way back to normalcy are undoubtedly powerful.

The film takes a closer look at the intersectionality of these women's lives, delving into the challenges faced by those who chose to leave abusive relationships while navigating the complexities of motherhood. Their stories highlight the indomitable spirit that transcends generational boundaries, reinforcing the theme of unity and support within the black women community.

A particularly moving segment features the insightful perspective of a 92-year-old grandmother who shares her journey from Jamaica to Manchester in the 1960s. Her narrative provides a historical context, shedding light on the resilience and determination that defined the migration experience during that era.

‘Ode to Black Women.’ not only serves as a celebration of black womanhood but also as a tribute to the diverse narratives within the community. The film captures the essence of strength, sisterhood, and the collective power that emerges when women share their stories. Through a visually compelling lens, the documentary invites audiences to connect with the universal themes of perseverance and empowerment, leaving a lasting impression that transcends age, culture, and circumstance.





A DOCUMENTARY BY  
NATHANIEL LLOYD RICHARDS



ODE TO  
**Black Women.**



NATHANIEL LLOYD RICHARDS PRESENTS 'ODE TO BLACK WOMEN.' MUSIC & POEM BY NATHANIEL LLOYD RICHARDS  
VIDEO EDITOR **FENG YUZE** CINEMATOGRAPHY BY **KEVIN PAUL LAWRENCE**  
DIRECTED BY **NATHANIEL LLOYD RICHARDS**



button  
poetry

2024 VIDEO CONTEST -  
INTERNATIONAL WINNER







A DOCUMENTARY BY  
NATHANIEL LLOYD RICHARDS

# 2024 VIDEO CONTEST - INTERNATIONAL WINNER

## ODE TO **Black Women.**



button  
poetry

NATHANIEL LLOYD RICHARDS PRESENTS 'ODE TO BLACK WOMEN.' MUSIC & POEM BY NATHANIEL LLOYD RICHARDS  
VIDEO EDITOR **FENG YUZE** CINEMATOGRAPHY BY **KEVIN PAUL LAWRENCE**  
DIRECTED BY **NATHANIEL LLOYD RICHARDS**



# ODE TO Black Women.





# #Odetoblackwomen





# FAQ

## 1. What is the film about?

- 'Ode To Black Women.' is a brief yet powerful documentary highlighting the resilience of four remarkable women. From a saxophonist overcoming breast cancer to a pregnant survivor of COVID-19, and a Jamaican grandmother recounting her journey to England in the 1960s, this film beautifully weaves together diverse stories of strength and triumph.

## 2. Where and when was the film filmed?

- The film was filmed in Manchester, UK in January 2024 (with additional scenes shot in Shenzhen, China.)

## 3. What inspired the creation of the film?

- The film 'Ode To Black Women.' was inspired by the profound desire to amplify the often overlooked stories of resilience, triumph, and unyielding strength within the diverse experiences of black women, drawing inspiration from their unique narratives as a source of empowerment and celebration.

## 4. How did the project come together?

- Starting as a heartfelt poem, 'Ode To Black Women.' evolved into a visual journey— from a photoshoot capturing essence to a mini documentary. The process involved assembling a talented team, reaching out to inspiring women, conducting heartfelt interviews, and scouting locations, weaving together a tapestry of resilience and strength.

## 5. What makes this film unique or different?

- What sets 'Ode To Black Women.' apart is its unique fusion of poetic inspiration, visual storytelling, and the intimate narratives of extraordinary women, creating a compelling and distinctive celebration of resilience and empowerment.

## 6. What challenges did the you face during production?

- Despite facing financial challenges and being entirely self-funded, the creation of 'Ode To Black Women.' persevered, a testament to the unwavering commitment to amplify the powerful stories of black women and showcase their resilience in the face of adversity.

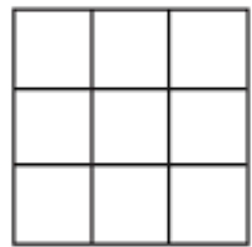
## 7. What genre does the film belong to?

- Short documentary (11:43 minutes)



# Creative Futures x Soho House Fellowship Program

Selected as a Creative Futures Fellow, I am honored to join a dynamic community of artists whose work pushes boundaries across disciplines. This fellowship provides me with exclusive access to Soho House spaces and resources worldwide, connecting me to an inspiring global network and offering unique environments to deepen my creative practice. Over the next year, I'll have the invaluable opportunity to develop a significant project or expand my creative career, supported by Soho House's resources and a community of like-minded creatives committed to innovation and social impact.



SOHO HOUSE

**CREATIVE**  
*Futures*  
collective



SOHO FELLOWSHIP PROGRAM

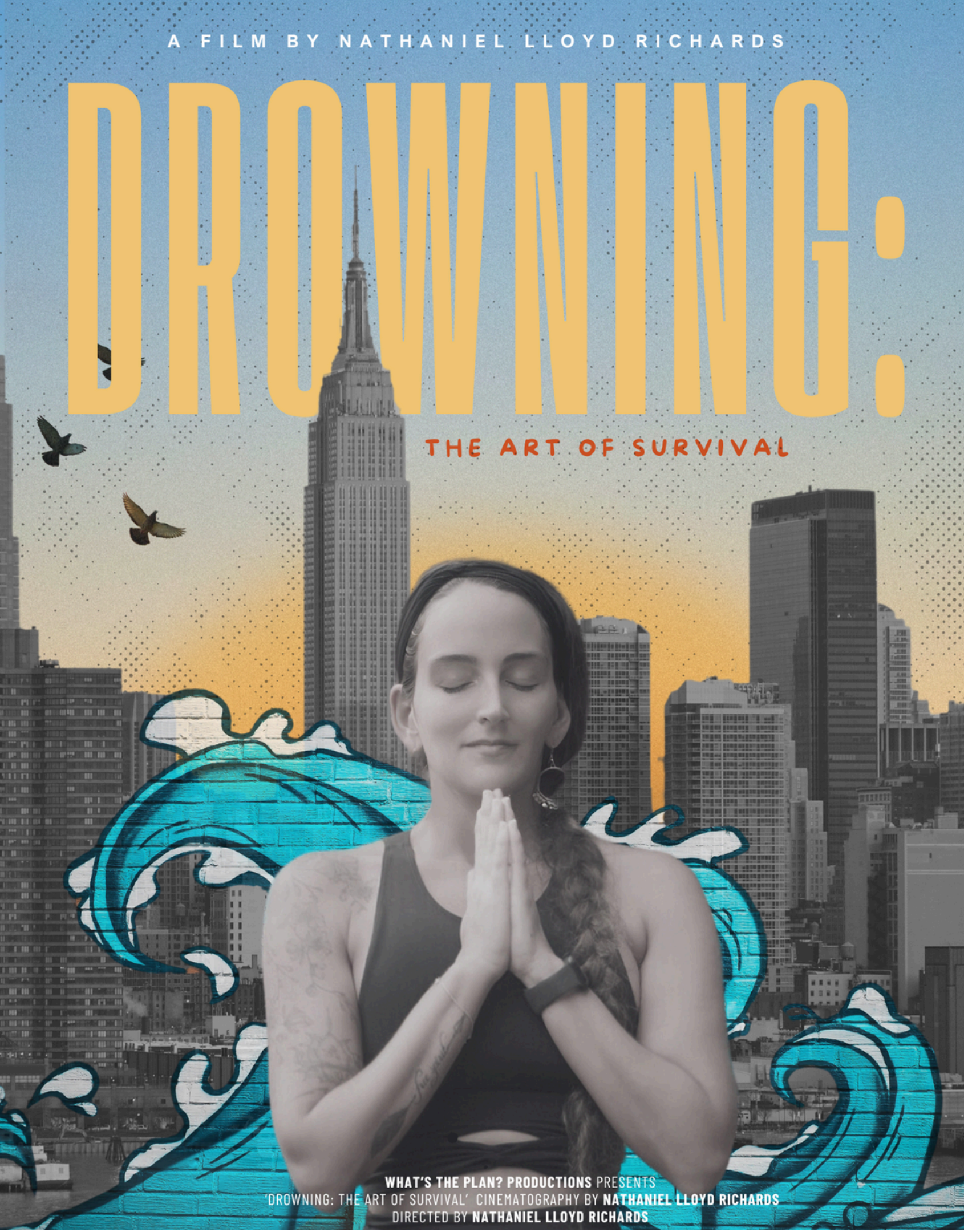




A FILM BY NATHANIEL LLOYD RICHARDS

# DROWNING:

THE ART OF SURVIVAL



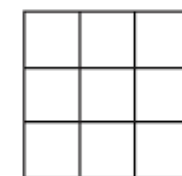
WHAT'S THE PLAN? PRODUCTIONS PRESENTS  
'DROWNING: THE ART OF SURVIVAL' CINEMATOGRAPHY BY NATHANIEL LLOYD RICHARDS  
DIRECTED BY NATHANIEL LLOYD RICHARDS

## Creative Futures x Soho House Fellowship Program

Drowning: The Art Of Survival is my upcoming feature length documentary that explores how art and spirituality provide pathways to healing from trauma.

Filmed entirely by myself across diverse locations in Thailand and Europe, the project is part of my fellowship with Creative Futures and Soho House, showcasing a deeply personal and transformative narrative of survival, faith and artistic expression

Trailer  
[Click Here](#)



SOHO HOUSE

**CREATIVE**  
*Futures*  
collective



# DROWNING:

THE ART OF SURVIVAL





# FAQ

## 1. What is the film about?

Drowning: The Art of Survival is a cinematic documentary that explores the transformative power of art and spirituality in helping people navigate and heal from trauma. Set against the diverse landscapes of Thailand and the UK, the film combines emotional storytelling with striking visuals to illuminate the resilience of the human spirit and the universal need for self-expression.

## 2. Where and when was the film filmed?

The film was shot in various locations across Thailand and the UK between 2024 and 2025.

## 3. What inspired the creation of the film?

The inspiration for Drowning came from my passion for amplifying stories of resilience and exploring how creativity and faith serve as tools for healing. It reflects my desire to highlight the often-overlooked connection between art, spirituality, and recovery, while also showcasing the beauty of diverse cultural landscapes.

## 4. How did the project come together?

Drowning was developed as part of my Creative Futures Fellowship with Soho House, which provided the resources and time to bring this vision to life. I took full creative control of the project, from directing and cinematography to editing and sound design. By capturing intimate stories in Thailand and the UK, I sought to create a cohesive narrative that blends emotional depth with breathtaking visuals.

## 5. What makes this film unique or different?

What sets Drowning apart is its combination of powerful storytelling and cinematic artistry. The film weaves together deeply personal interviews with stunning visuals of Thailand's lush landscapes and the UK's serene settings. My comprehensive involvement in every aspect of the filmmaking process—from cinematography to editing—ensures a cohesive and intimate experience that merges emotional depth with visual beauty.

## 6. What challenges did you face during production?

One of the biggest challenges was balancing the emotional weight of the stories with the technical demands of capturing them cinematically. Filming across two countries with varied terrains and conditions also required careful planning. Additionally, I had to work with new equipment and shoot by myself which occasionally limited the scope of my creative vision.

## 7. What genre does the film belong to?

Cinematic documentary (approximately 60 minutes).



A NATHANIEL LLOYD RICHARDS FILM

# MANCHESTER'S GOT SOMTHING TO SAY

[ SHORT DOCUMENTARY ]

## MANCHESTER'S GOT SOMETHING TO SAY...

Manchester's Got Something to Say is a short documentary I began during my time at Factory Academy studying Business x Creativity. It captures the voices and perspectives of local creatives, exploring what art means to the city and those shaping its future. Featuring interviews with figures like Dominic Bilton at The Whitworth, the film highlights Manchester's vibrant cultural scene and the importance of giving space to unheard voices.

Full Film  
Click Here







# Resilienza

## Frenkiel & Ponti Artist Residency



"Resilienza" is a poetry film born from my residency with the Frenkiel & Ponti Foundation, nestled in the serene hills of Abruzzo, Italy. This project delves into the essence of resilience, scrutinising the societal demands to exhibit strength and swiftly overcome trauma. Over a span of two weeks, I immersed myself in the breathtaking landscapes of Montenero, aiming to weave the tranquility of my surroundings with the profound introspection I underwent during this period.

Taking the helm of "Resilienza," I embraced full creative autonomy for the first time in my career. This entailed not only directing and filming but also colour grading, editing, and composing the film's music, in addition to engineering its sound. The process was arduous yet deeply fulfilling, serving as a testament to my versatility as an artist. Through this journey, I honed invaluable skills and fortified my confidence in my multifaceted artistic capabilities.

"Resilienza" stands as a testament to the power of self-reflection and the beauty of vulnerability, set against the backdrop of Montenero's natural splendour. This film is a personal narrative of growth and resilience, and I am thrilled to be able to share what I created during my time there.



# Resilienza





# FAQ

## 1. What is the film about?

"Resilienza" is a poetry film that explores the concept of resilience, delving into societal pressures to appear strong and recover quickly from trauma. Set against the stunning backdrop of Montenero, Italy, the film blends visual beauty with introspective self-reflection. It captures the journey of personal growth and the intimate process of embracing vulnerability.

## 2. Where and when was the film filmed?

- The film was filmed in Montenero, Abruzzo in southern Italy

## 3. What inspired the creation of the film?

The film "Resilienza" was inspired by my personal journey of self-reflection and growth during my residency in the tranquil hills of Abruzzo, Italy. It also draws from the societal pressures to appear resilient and recover swiftly from trauma.

## 4. How did the project come together?

"Resilienza" came together during my residency at Frenkiel and Ponti in Abruzzo, Italy. Over two immersive weeks, I took full creative control, from shooting and colour grading to editing and composing the music. This comprehensive involvement allowed me to seamlessly blend the serene beauty of Montenero with the intimate themes of resilience and self-reflection, resulting in a deeply personal and cohesive film.

## 5. What makes this film unique or different?

What makes "Resilienza" unique is its fusion of poetry and film, captured entirely by a single artist in the picturesque hills of Montenero, Italy. The project showcases my comprehensive creative involvement, from cinematography and editing to music composition and sound engineering, offering a deeply personal and introspective narrative on resilience. This multifaceted approach creates a distinctive, intimate experience that merges stunning visuals with profound emotional depth.

## 6. What challenges did the you face during production?

Filming myself does come with some limitations it is also a lot more time consuming. The shoot also reminded me that a lot of the equipment i used to shoot and edit needs upgrading.

## 7. What genre does the film belong to?

Visual poetry film (5:25 minutes)



# Media

**Interview in Mas Magazine issue 004**

**Canvas Rebel Interview**

**Outside Radio Podcast interview**

**Muleskinner Journal - Leagacy Journal 2 - Words by Nathaniel  
Lloyd Richards**



**Find Me On Social Media Or  
Contact Me.**

## **Contact**

nathaniellloydrichards@gmail.com  
[www.nathaniellloydrichards.com](http://www.nathaniellloydrichards.com)



[naeuk](#)  
[nathaniellloydrichards](#)

